

1. SET UP THE POP UP STRUCTURE

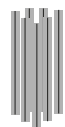


CONTENT



(x2) Led spotlights.

Open the bag, check the content of the bag and take out all the pieces carefully.



(x1) Set of Magnetic Bars



(x1) Set of Graphic Bars: Top and Bottom

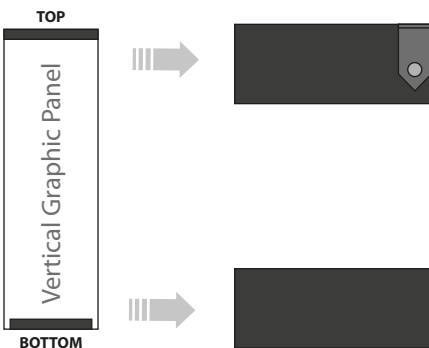


(x1) Magnetic Strip Roll



(x1) Trolley | Counter

GRAPHIC ATTACHMENT



The graphic of this Pop-up is made up of vertical panels.

Connect the top and bottom graphic bars to the corresponding part of the graphic panel with the Adhesive..

Repeat for all graphic panels.

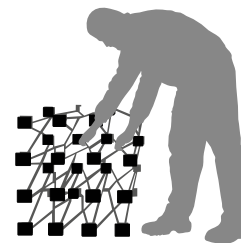
For those cases in which the graphic is **supplied by the client**, we recommend making use of the materials listed in the following **QR code** (scan for downloading Excel file). Please contact us or visit www.cashdisplay.com for more information.



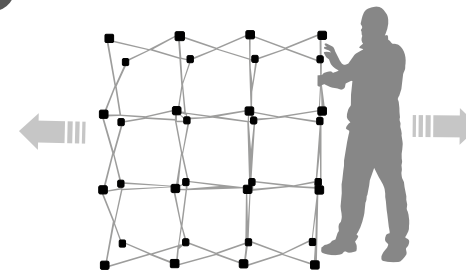
2. PUT THE MAGNETIC BARS IN THE STRUCTURE



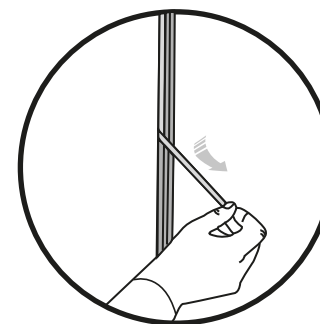
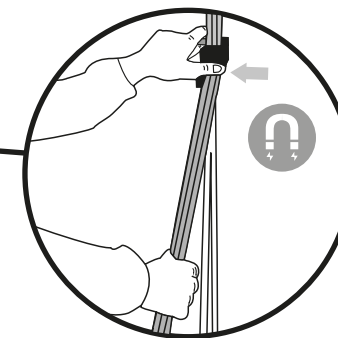
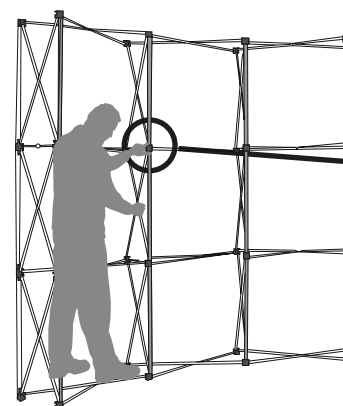
1



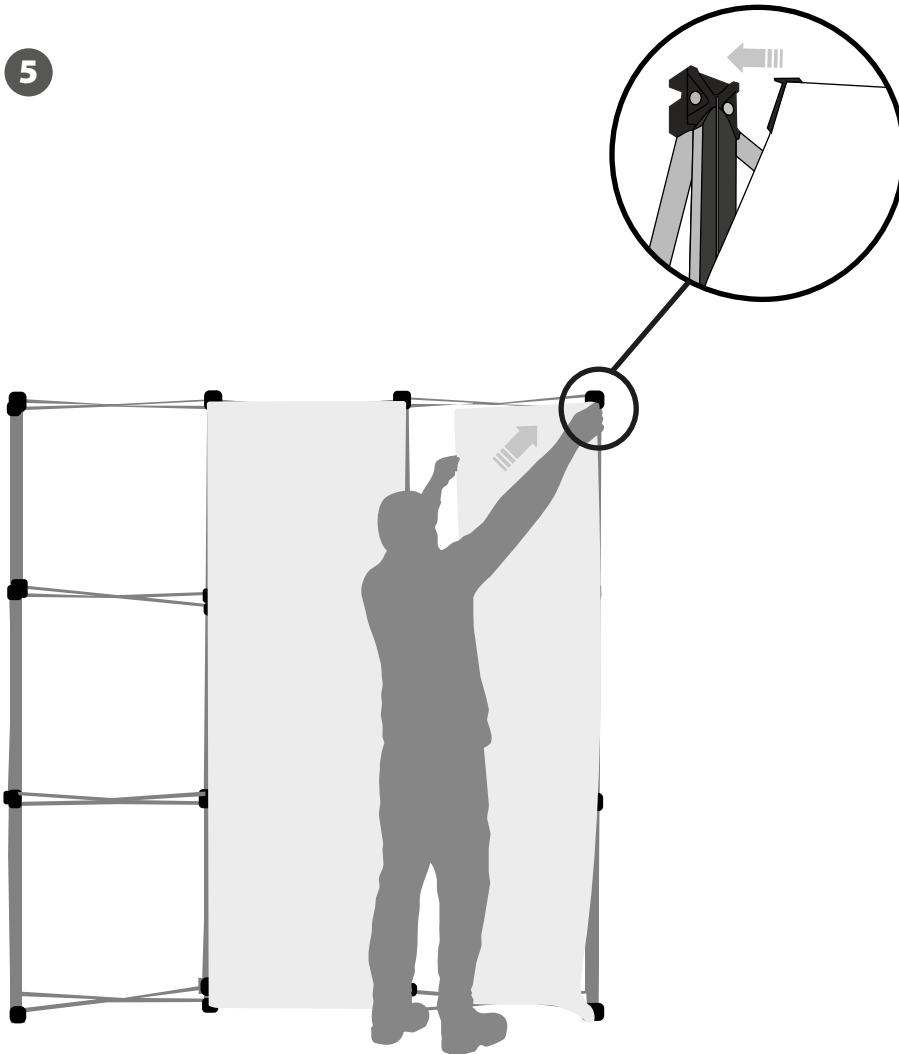
2



3



3. GRAPHIC ATTACHMENT



4. STANDING UP THE POP UP

